

## LAKEHEAD UNIVERSITY NSSE 2006 SUMMARY

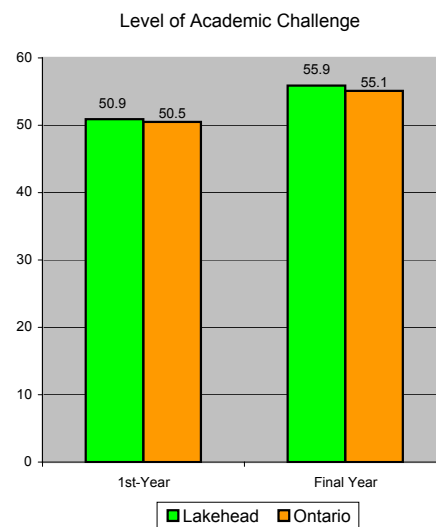
The National Survey of Student Engagement (NSSE) is a survey tool/instrument used to measure the quality of the post secondary educational experience across North America. Universities and baccalaureate-degree colleges in Canada and the U.S. use NSSE to measure the extent to which students engage in effective educational practices that are empirically linked with learning, personal development and other desired outcomes such as student satisfaction, persistence, and graduation. Information is obtained from random samples of first-year and senior students about the nature of their undergraduate experience. NSSE data are used by faculty, administrators, researchers, and other leaders in higher education for institutional improvement, accountability, and other purposes.

### A. Benchmark Scores - Lakehead University

#### 1. Level of Academic Challenge (LAC)

Challenging intellectual and creative work is central to student learning and collegiate quality. Colleges and universities promote high levels of student achievement by emphasizing the importance of academic effort and setting high expectations for student performance.

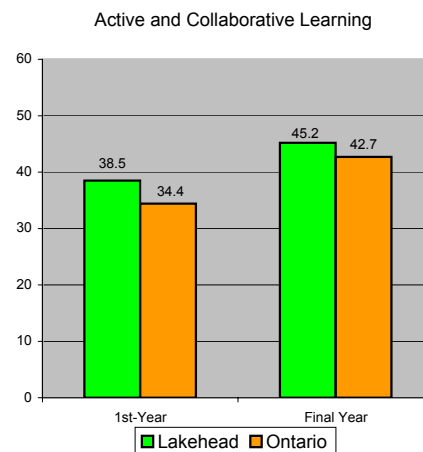
- Preparing for class (studying, reading, writing, rehearsing, etc. related to academic program)
- Number of assigned textbooks, books, or book-length packs of course readings
- Number of written papers or reports of 20 pages or more; number of written papers or reports of between 5 and 19 pages; and number of written papers or reports of fewer than 5 pages
- Coursework emphasizing analysis of the basic elements of an idea, experience or theory
- Coursework emphasizing synthesis and organizing of ideas, information, or experiences into new, more complex interpretations and relationships
- Coursework emphasizing the making of judgments about the value of information, arguments, or methods
- Coursework emphasizing application of theories or concepts to practical problems or in new situations
- Working harder than you thought you could to meet an instructor's standards or expectations
- Campus environment emphasizing time studying and on academic work



#### 2. Active and Collaborative Learning (ACL)

Students learn more when they are intensely involved in their education and asked to think about what they are learning in different settings. Collaborating with others in solving problems or mastering difficult material prepares students for the messy, unscripted problems they will encounter daily during and after college.

- Asked questions in class or contributed to class discussions
- Made a class presentation
- Worked with other students on projects during class
- Worked with classmates outside of class to prepare class assignments
- Tutored or taught other students
- Participated in a community-based project as part of a regular course
- Discussed ideas from your readings or classes with others outside of class (students, family members, co-workers, etc.)

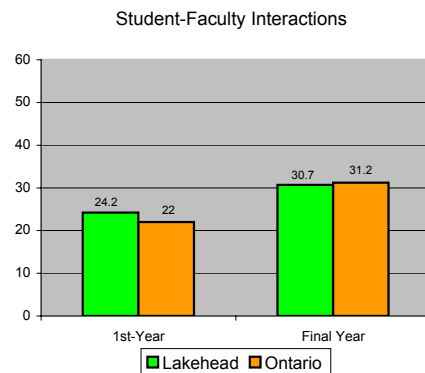


## LAKEHEAD UNIVERSITY NSSE 2006 SUMMARY

### 3. Student-Faculty Interactions (SFI)

Students learn firsthand how experts think about and solve practical problems by interacting with faculty members inside and outside the classroom. As a result, their teachers become role models, mentors, and guides for continuous, life-long learning.

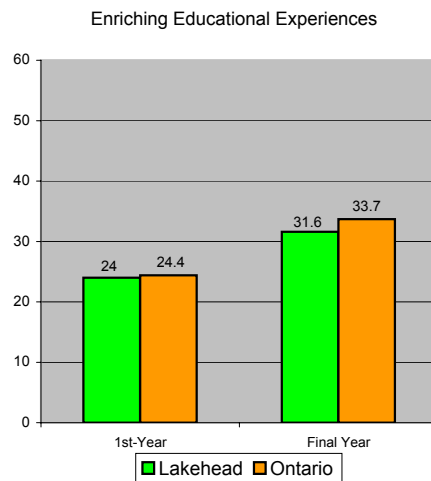
- Discussed grades or assignments with an instructor
- Talked about career plans with a faculty member or advisor
- Discussed ideas from your readings or classes with faculty members outside of class
- Worked with faculty members on activities other than coursework (committees, orientation, student-life activities, etc.)
- Received prompt written or oral feedback from faculty on your academic performance
- Worked with a faculty member on a research project outside of course or program requirements



### 4. Enriching Educational Experiences (EEE)

Complementary learning opportunities enhance academic programs. Diversity experiences teach students valuable things about themselves and others. Technology facilitates collaboration between peers and instructors. Internships, community service, and senior capstone courses provide opportunities to integrate and apply knowledge.

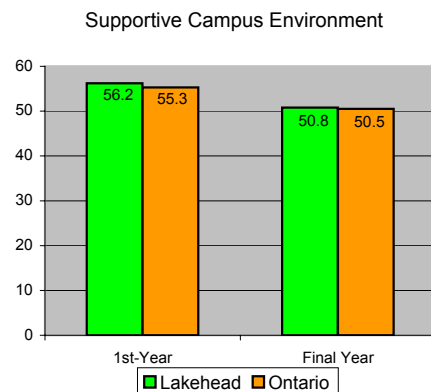
- Participating in co-curricular activities (organizations, publications, student government, sports, etc.)
- Practicum, internship, field experience, co-op experience, or clinical assignment
- Community service or volunteer work
- Foreign language coursework & study abroad
- Independent study or self-designed major
- Culminating senior experience (capstone course, senior project or thesis, comprehensive exam, etc.)
- Serious conversations with students of different religious beliefs, political opinions, or personal values
- Serious conversations with students of a different race or ethnicity
- Using electronic technology to discuss or complete an assignment
- Campus environment encouraging contact among students from different economic, social, and racial or ethnic backgrounds
- Participate in a learning community or some other formal program where groups of students take two or more classes together



### 5. Supportive Campus Environment (SCE)

Students perform better and are more satisfied at universities that are committed to their success and cultivate positive working and social relations among different groups on campus.

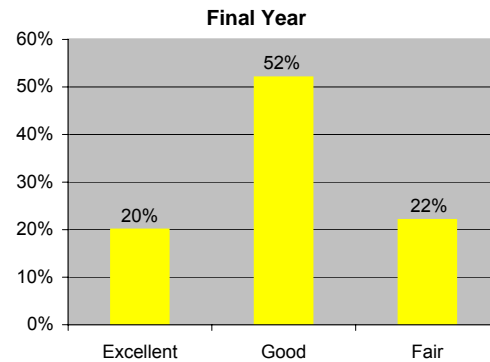
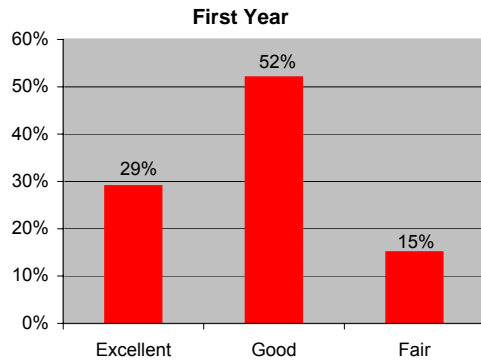
- Campus environment provides the support you need to help you succeed academically
- Campus environment helps you cope with your non-academic responsibilities (work, family, etc.)
- Campus environment provides the support you need to thrive socially
- Quality of relationships with other students
- Quality of relationships with faculty members
- Quality of relationships with administrative personnel and offices



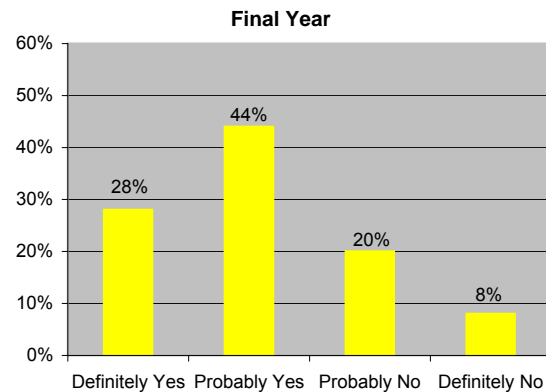
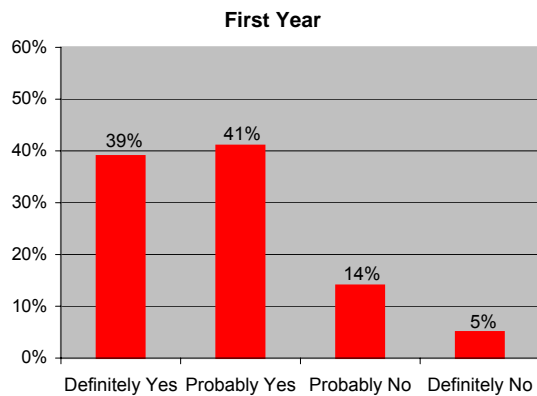
## LAKEHEAD UNIVERSITY NSSE 2006 SUMMARY

### B. Frequency Distributions - Lakehead University

13. How would you evaluate your entire educational experience at this institution?



14. If you could start over again, would you go to the same institution you are now attending?



### C. Supplemental Questions (for Ontario Universities only)

A4: Select up to 2 items you believe your university most needs to address to improve the student/academic/learning experience in the classroom.

	Lakehead University	
	1st-Year	Final Year
a) Improving the quality of classrooms or lecture halls	31%	24%
b) Improving the quality of course instruction by professors	24%	28%
c) Improving the quality of teaching assistants	10%	7%
d) Ensuring a better fit between course content, assignments, and test/exams	16%	14%
e) Increasing the number or variety of course offerings <b>in your major</b>	24%	39%
f) Increasing the number or variety of course offerings <b>outside your major</b>	14%	8%
g) Reducing class sizes overall	7%	7%
h) Improving the quality of labs	8%	14%
i) Improving student access to information technology	5%	3%
j) Providing more current/relevant courses and curriculum	7%	8%
k) Changing the mix of lectures, seminars, tutorials, and labs	10%	4%
l) Increasing opportunities to learn more about global issues	7%	6%

## LAKEHEAD UNIVERSITY NSSE 2006 SUMMARY

A5: Select up to 2 items you believe your university most needs to address to improve the student/academic/learning experience outside the classroom.

	Lakehead University	
	<u>1st-Year</u>	<u>Final Year</u>
a) Increasing contact with professors outside of class	32%	19%
b) Expanding and/or improving the quality of academic support services	19%	23%
c) Expanding and/or improving the quality of personal support services	12%	16%
d) Providing students with more opportunities to undertake research with faculty	20%	21%
e) Improving the library collection	13%	24%
f) Improving library services	8%	6%
g) Improving the quality/availability of study spaces	22%	25%
h) Increasing opportunities for international experiences	19%	12%
i) Working to provide a better social environment for students	16%	14%

Note: Sept.2008: Benchmark scores are not percentages.

	<b>1st-Year</b>	<b>Final Year</b>
Lakehead	50.9	55.9
Ontario	50.5	55.1

	<b>1st-Year</b>	<b>Final Year</b>
Lakehead	38.5	45.2
Ontario	34.4	42.7

	<b>1st-Year</b>	<b>Final Year</b>
Lakehead	24.2	30.7
Ontario	22	31.2

	<b>1st-Year</b>	<b>Final Year</b>
Lakehead	24	31.6
Ontario	24.4	33.7

	<b>1st-Year</b>	<b>Final Year</b>
Lakehead	56.2	50.8
Ontario	55.3	50.5

	Count	1st-Year	Final Year
Excellent	161	29%	20%
Good	295	52%	52%
Fair	85	15%	22%

Poor	18	3%	6%
------	----	----	----

Total	559	100%	100%
Definitely Y	223	39%	28%
Probably Y	226	41%	44%
Probably N	80	14%	20%
Definitely N	29	5%	8%
Total	558	100%	100%

Count	1st-Year	Count
175	31%	166
138	24%	195
53	10%	49
94	16%	97
124	24%	271
69	14%	54
41	7%	47
45	8%	94
30	5%	19
36	7%	57
58	10%	32
43	7%	41

Count	<b>1st-Year</b>	Count
174	32%	132
104	19%	156
67	12%	106
102	20%	144
73	13%	167
42	8%	41
123	22%	175
111	19%	82
90	16%	96